



Visit www.plasticbagrecycling.org for information on how to order materials



RECYCLE PLASTIC BAGS AT YOUR STORE

PLASTICS. TOO VALUABLE TO WASTE. RECYCLE.™

Entrances and Exits

Consumers want to know where they can recycle their plastic bags. In addition to providing recycling bins in convenient locations, grocers and retailers can help through employee and consumer education. Posters and well-marked recycling bins near entrances remind customers to return bags for recycling.

- Conveniently locate garbage cans for consumers to place their trash
- Ideally, locate garbage cans so consumers reach it before reaching the plastic bag recycling bin to avoid contamination
- Use transparent bins and transparent bags to enable better quality control
- Place signage near the recycling bin opening to deter consumers from putting trash in the bin
- Avoid recycling bins that resemble garbage cans.

Window Posters (16" x 24")



4



1

Recycling Bin



2

Recycling Bin Sign Stand (11" x 17")



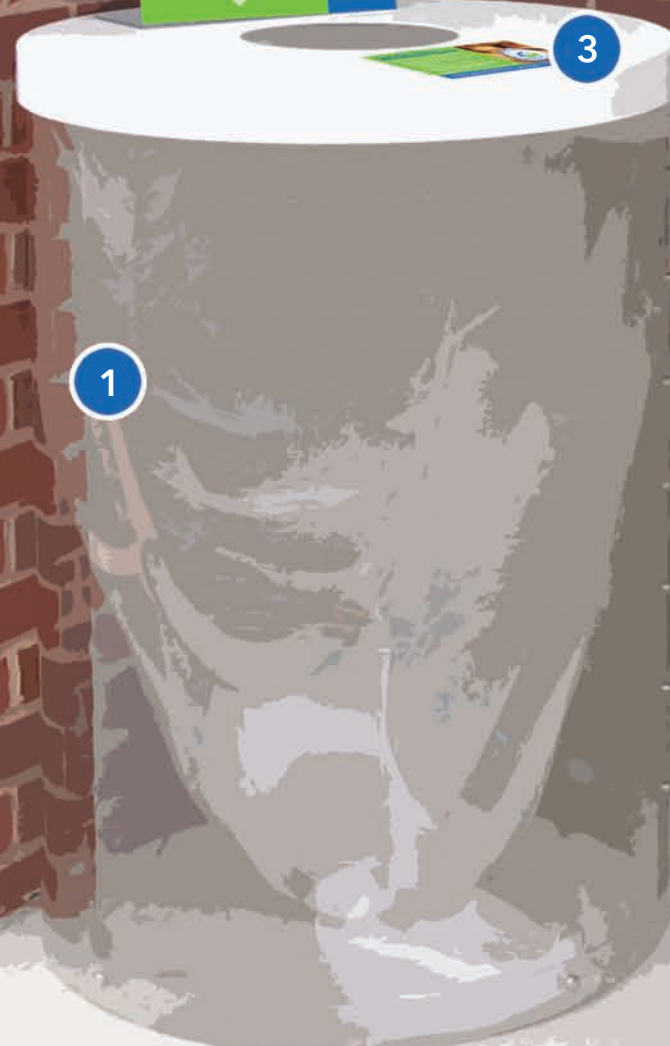
3

Recycling Bin Facts Decal (7" x 5")

2



1



3

4



Checkout Stations

In addition to posters at entrances, simple decals near bag stands and buttons on cashiers and baggers serve to inform customers that plastic bags are recyclable at your store. Also consider a decal with recycling facts at the cashier stand.

Employee training is essential to the success of at store recycling programs. Make sure employees are aware of the recycling protocol. Have them point out the availability of store recycling bins and mention www.plasticbagrecycling.org.

1 Checkout Decal

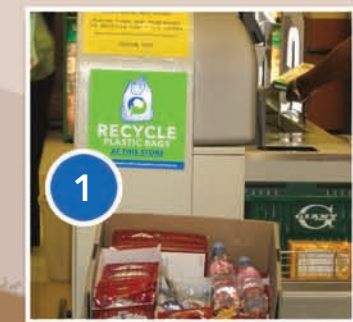
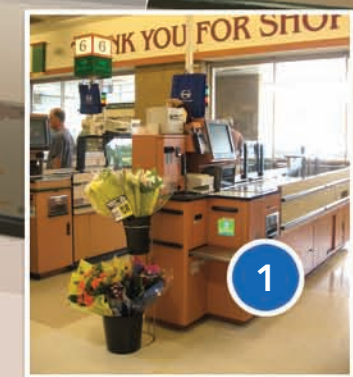
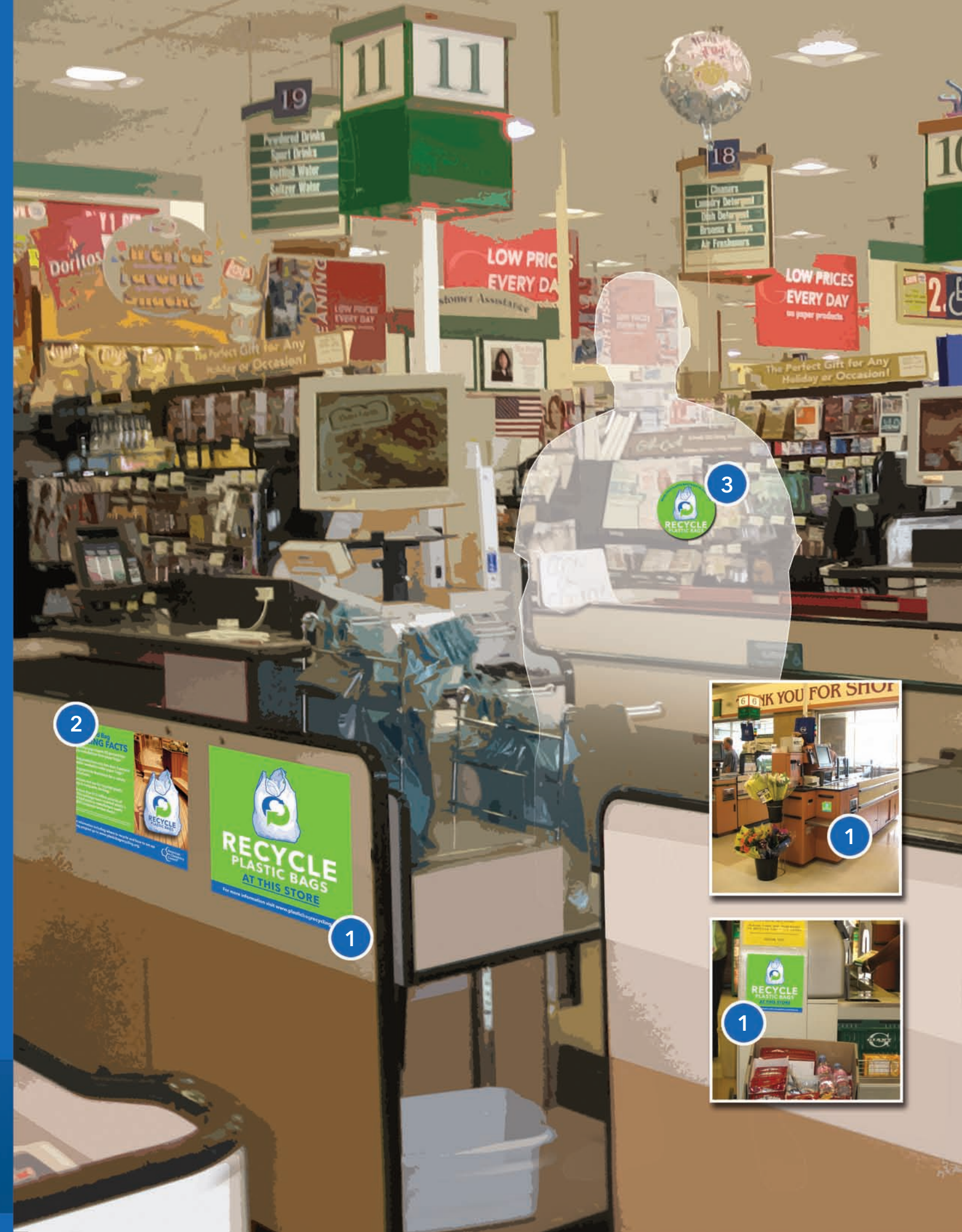


2



2 Recycling Facts Decal (7" x 5")

3 Employee Button (3")





Bags

Bag marks are another way to educate the consumer. Consider using a mark like the ones below on plastic shopping bags. You can ask your bag supplier to help.

In California and New York City retailers are required to include recycling information and specific wording on plastic grocery bags provided to consumers. The bag marks displayed here comply with those requirements. Requirements may vary based on where your store is located so always check the labeling on your bags with qualified experts for your specific location.



Visit www.plasticbagrecycling.org for information on how to order materials